
THE COUNTRY SPIRE

Volume 33 issue 6

June, 2008

There's Never Been a Better Time to Buy Stock!

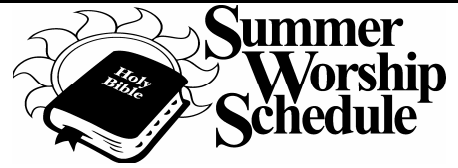
That's right—it's time to buy stock—in our young people's mission to the BWCA. 15 of our young people are going to the Wilderness BWCA Camp of the ELCA this summer on a building crew to help restore the area after the horrible wildfires last year. They will be doing mission and also have the fantastic opportunity to do faith growing on the way.

We want to invite you to be a part of their mission trip. They are asking two things of you. First, please pray for all of them who are going on this mission. Second, they are selling "shares" in their trip and they are asking you to help by purchasing one. Each share is \$10 and each person going on the mission needs to sell 25 in order to pay for their week of adventure and mission. If you purchase one or more shares in their mission you will not only receive a wonderful stock certificate, you will be invited to their Shareholders Dinner on Wednesday August 13th where they will not only feed you, but share their stories of building and of ministry with you.

If you are able to help – watch for our youth on Sundays in June. They will be in the narthex just waiting to help you fill out your stock certificate. Thanks for all your support as our young people set out to do God's work in our world.

Bible Verse for June: Psalm 96:2

**Sing to the LORD, bless his name;
tell of his salvation from day to
day.**



The start of our Summer Worship Services began on May 28th. Our Wednesday Night Worship begins at 7:00 pm, with our "Sundaes on Wednesdays" following the service.

Our Summer Sunday Worship Schedule will be: an 8:00 am service and a 9:30 am service.

Teacher/Mentor Appreciation Picnic

Attention all teacher, mentors, shepherds, and anyone who helped with our kid's education ministry this year. We are having a picnic in YOUR honor. Join us Sunday June 22nd at 11am for hot dogs, burgers, potato salad, and all the fixings in appreciation of your ministry with our kids. This will be a family event – so bring the kids – there'll be lots of fun for everyone.

Inside This Issue

F.Cover	Stock, Bible Verse, Summer Worship, Picnic
2-3	Pastor Howard's Column
3	Stained Glass Window Report
4	Youth Education
5	Parish Nurse Notes
6	Council Report & LLLC Happenings
7	LLC Directory & Bell & Cross Comm.
8	Recycling, Festival and Luther Point News
9	Circles & Groups, Financial Report
10	Daycamp
11-12	LLC Youth News
13	Birth, Bapt & Ann in June/Pastoral Acts May
14	Volunteers for June
15	June Calendar
BCover	It's June!

June, 2008

Dear Members, Friends, and Community of
Long Lake Lutheran Church:

I picked up a book recently entitled “**THE CENTERED LIFE**”, written by a seminary classmate, Jack Fortin. In one of his chapters, he talks about “discerning God’s call.” So often we think of pastors being called to serve a congregation and we limit the concept of a call to only those who serve in that capacity. And many times, we tend to think that a call to ministry is a dramatic vision that leads a person to respond to the call of God. However, as Jack suggests, “most often God uses ordinary natural means” to invite us to respond to God’s call to serve.

I invite you to consider the following ideas that Jack Fortin has shared in his book, “**THE CENTERED LIFE**”, to help us discover how God is calling each of us to the ministry of Jesus Christ.

- Discern our Gifts – There is freedom in knowing what we were created to be. We find meaning and purpose in our lives when we understand that we were created by God with unique gifts and strengths, to serve God by serving and loving our neighbors. When we discover the gifts God has given us, we are able to focus on them and carry them out with joy.
- Looking at our Context – what circumstances in your life disclose where your gifts may be used. Be open to where God needs you in terms of where God wants you to act. It can

manifest itself in roles that are right in front of you. It may appear in your place of work, your home, your church, your community, in worship. God is always busy placing his call to ministry in the most ordinary places and it is our task to let the Spirit of God open our eyes and ears to what he is asking of us. God asks us to listen and watch where He is directing us.

- Prayer – It is critical to ask God in prayer, Lord, what do you want me to do? Be assured God will show you. Every day that prayerful question is important.
- Listen to your life – Reflect for a moment the truth and values of your heart that gives us our identity.
- Joy – In a helpful book entitled “**Healing the Purpose of Your Life**”, the authors talk about one’s ‘sealed orders’. These sealed orders come from God and they evoke an energy of joy that is inspired by the creative power of the Holy Spirit. When we tap into this power that was given to the early disciples, we realize it is given to us as well and then our call to ministry will have a sense of joy and passion.

Jack goes on to identify 4 qualities of a call for all of us.

1. A call tends to be simple and direct.
2. A call is impossible for us to achieve on our own. (We need the power of God.)

3. A call usually goes against the grain of society and its values.
4. A call happens in community. (our church)

As we consider God’s call to ministry it is important to us to be mindful of the words of Pastor Chris Bellefeuille of St. Barnabas Lutheran Church. He writes, “a centered life is a life where we live out the values that have been shaped and informed by our Christian faith in everything we do.” ‘Think for a moment, what are the top 5 values that are informed by your daily convictions of faith? What would they be? And if you can clearly identify them, how does your daily life and all of its activities & responsibilities reflect those values that you consider to be critical and iron clad. I think Dr. Fortin is very helpful in exploring the values we might have including family, community, service, commitment, devotion and trust to God, compassion, prayer and love for Christ’s church.

Is our life Centered? Is it centered on the values we hold dear and are committed to every day? Is it centered on Christ and His ministry of forgiveness and hope? Does it make a difference in our life together and those who God has entrusted us to care and love?

THIS AND THAT

- I want to thank the choir for their gifts of music this past year.
- I want to thank all of the teachers, staff and mentors who shared and impacted our Sunday School children’s journey of faith.
- I want to thank all who have served faithfully and joyfully in many different capacities.

- I want to emphasize how important it is to commit to worship this summer.

On Sundays: 8 am and 9:30 am.

On Wednesdays: 7 pm – we need and expect at least 20-25 each Wednesday so that we can commit to the whole summer. Remember Ice Cream Sundaes after worship every Wednesday.

- Bible School Every Wednesday during June.
- Faithful worship (I know I am repeating myself, but I do it for emphasis!)
- Commitment to the Capital Campaign
- Come to the Fish Fry on Friday, June 20th.

In Christ’s Name,

Pastor Howard

STAINED GLASS WINDOWS

I hope you all have taken a few moments to look at the new windows and thought about the story in each one. There was a very interesting article about the artist and our church windows in the Isanti County News a couple weeks ago that I hope you had a chance to read.

We still have two windows we’d like to do before we are done. They are the two smaller windows on either end in the back of the sanctuary – the ones on each side of “Jesus in the Garden” and “the Empty Tomb”. We do have one donor who has given money towards this, and a couple more families have expressed interest, but we need a few more people in order to complete this project. If you are interested, (or just

curious) please call Jean Hansen at 763-444-5447 or the church office.

Betty Lundeen is in charge of the dedication ceremony and it is set for October 5th. The former Pastor, Paul Hammar is scheduled to be the guest speaker, and he and his wife Carol are looking forward to seeing old friends. We are hoping to have other former pastors join us also, and lots of music. Karin (Merkouris) Bohan and her husband have agreed to sing. Plans are for a potluck dinner after worship and the program at 2 pm, with cake and coffee to following the dedication.

Please keep this date open and plan to join us for a wonderful day with our church family. If you have any suggestions, please contact Betty Lundeen, Jean Hansen or the church office.

Kids and Youth on a Mission

Later this summer and early fall we will be asking our Sunday School kids, our confirmation students, and other young people at Long Lake to be in mission with Lutheran World Relief as we make “School Kits” to go to children around the world.

“A school kit may provide the only supplies for children returning to school after the disruption of war. School kits help parents continue their children's education, even while living in a refugee camp, for example.”

We want you to start thinking about your ability to help put these “school kits” together due to the fact that school supplies will hit our local stores in July (long before any of us are ready to go back to school) and we want you to be able to procure the best deals you can on anything you may be able to donate.

What is in a “school kit”? Each kit will be put into a hand sewn bag made by the women of Long lake and needs to include the following:

- Padded or spiral notebooks of ruled paper approximately 8" X 10-1/2" totaling 150-200 sheets (if using 70-count notebooks, please include three); do not include loose-leaf paper
- One blunt scissors (safety scissors with embedded steel blades work well)
- One 30-centimeter ruler, or a ruler with centimeters on one side and inches on the other
- One pencil sharpener
- Six new, unsharpened #2 pencils with erasers; secure together with a rubber band
- One eraser approximately 2-1/2" long
- 12 sheets of construction paper in assorted colors (if necessary, fold in half to fit into the school kit bag)
- One box of 16 or 24 crayons

Watch for information to come in July about where to bring items and when we need them. Until then, be thinking – and maybe even purchasing as the prices allow – so that we can be in mission with children around the world.

Are You Ready to Akaloo???????

Anyone Interested in Education Ministry for Kids or Adults is welcome to join us for a presentation by our Congregational Representative at Augsburg Fortress, Kirsten Patterson on **Thursday June 26th from 6-8pm.** She will be talking to us about “Akaloo” the all generations (birth – adult) education program we are thinking of using in the fall. Come find out what it’s all about and help us to learn about new possibilities for our faith journeys.

It's NOT Too Late to Join Power Lab!

VBS 2008 starts on Wednesday June 4th and it is NOT too late for you to get involved! Join us for a light supper at 5:30pm and programming from 6-8pm. We have nursery for little ones, and programming for pre-k's through adults! It's a family, intergenerational, youth friendly, kid like adventure in the Power of Jesus! Just come on Wednesday night and we will get you signed up!



PARISH NURSE NOTES

Health. What do you think of when you hear the word health? What does it mean to you? For some people health is strictly related to physical well being. It is the presence or absence of disease. It is something that is measured and in some instances can be controlled through lifestyle choices, medications and/or surgery. For other people, health is seen as a state of mind.

Health is actually a combination of many different aspects of our lives. It is true that physical well being is a big part of our health. However, we also need to look at the other areas in our lives in order to see the big health picture. I'm sure we have all gone through times when we may be medically healthy, but we still don't feel the best. We may lead a healthy lifestyle, eating right and exercising and not using tobacco products, and still not be healthy. If one area of our life is out of balance, it can affect all the other areas. We need to include all aspects of ourselves in order to see how healthy we really are. These other health areas include mental, emotional and spiritual health. Health also does not mean a

lack of person

not be

they

they

in other areas of their lives. Emotional and spiritual health, are not always a priority within the medical field. We know though what we feel like if we are going through a difficult time in our lives. It could be the loss of a loved one, loss of a marriage or job, difficulty in school or depression. Maybe you now are having to care for an aging parent. It is very difficult when the roles change in our families, and you have to make decisions that are sometimes painful for everyone. Maybe you are caring for your spouse who has dementia, and you are burned out. Sometimes we feel so overwhelmed that we just don't know what to do. When we get to that point of being "burned out" and overwhelmed, that's when we can also get sick.

There are ways to keep yourself healthy, emotionally and spiritually while going through these difficult journeys. Prayer is a very powerful part of our spiritual health. We can pray for our own health and also for others, as we pray for all those listed on the prayer list. Some people find help and comfort in support groups, while others find more comfort in talking with a good friend or the pastors. Others like being able to read about their situation. The church offers Care Notes which are available to everyone. These notes/booklets discuss many different issues, such as depression, caring for a loved one, facing cancer, teen issues, bullying, prayer and many more topics. These Care Notes are located in a rack in the hallway opposite of the bulletin board. I encourage you to take these notes for yourselves, family and friends. If you have questions about a certain issue and you

complete disease. A may physically very healthy, but feel good because are healthy



don't see a Care Note that is appropriate for you, just ask the parish nurse. I can order Care Notes that cover many different life situations.

Remember that whatever life situation you are going through you don't have to face it alone. You have people praying for you to be well. We are a faith community and we are called to offer Christ's love to each other. You deserve to be healthy in ALL areas of your life, physically, spiritually and mentally/emotionally.

In closing, there is a change in dates for the blood pressure screenings. Blood pressure screenings for the month of **June** will be held the **FIRST** Sunday between services instead of the second Sunday. The parish nurse will be on vacation from June 4-July 4. If you have any concerns, please contact either of the pastors.

In Christ's peace,
Mary Martin, RN, Parish Nurse



LONG LAKE LUTHERAN CHURCH
COUNCIL MIINUTES 5/8/08

The meeting was called to order by John Bartz. Candy read the devotions and the master calendar was reviewed. Council Reps for June are 8:00 am: Tony Steiner, 9:30 am: Tina Anderson and Wednesday nights: Candy McColley.

Our Summer Worship schedule is as follows: Sunday Morning Worship at 8:00 am & 9:30 am and Wednesday nights at 7:00 pm.

Treasurer's Report: Matt Hylen~we are behind in our giving by close to \$15,000.00.

Pastor's Reports: Howard~Has been busy with hospital calls and baptisms. Rhonda~Has been busy with the youth planning the summer work camp. The kids are going to be selling shares for

a fundraiser. They are also going to sell flowers on Mother's Day and coming up, they are planning to sell sweatshirts and t-shirts.

Property: Steve Vigstol~The 4-H group is looking to do flower beds on each side of the church. There was another Bell & Cross meeting at the Cornerstone building. Repairs may start in June.

Missions: Dale Findell~We will be doing a noisy offering for the cancer walk. Also, looking at doing back packs for kids for a mission outreach.

Worship & Music: Candy McColley~Wednesday night services will begin at 7:00 pm. We are looking at and wanting to use the power point more, to save on paper usage. We are also looking at a youth choir.

Stewardship: Tony Steiner~We will let the Congregation know each week how we are doing on the Capital Campaign. We are going to get gift cards from Cub Foods, like the County Market Cards.

Congregational Life: Rose Hass~There will be a fish fry on June 20th.

Education: Monica Ahlman~VBS will be Wednesday nights in June. Letters to upcoming seniors will be sent out. The last day of Sunday school will be May 18th.

Old Business: Outdoor Worship Service meeting will be held in June. We are looking at a change in the meal. The Stained Glass Window project is going great. We need to let the insurance company know about the new windows.

The meeting closed with prayer by Howard.

Respectfully Submitted,
Rose Hass, Council Secretary

LLLC Happenings:



June 8th-Senior Recognition at Worship.

June 4, 11, 18 & 25th-Wednesday Night Worship @ 7 pm, with "Sundaes on Wednesdays" to follow.

June 4, 11, 18 & 25th-VBS~Light Supper 5:30 pm, program from 6:00-8:00 pm.

June 20th-Fish Fry, time yet to be determined, watch the Sunday Bulletins.

June 22nd-Teacher/Mentor Appreciation Picnic at 11:00 am.

June 26th-Augsberg Educational Presentation from 6:00 pm-8:00 pm.



LONG LAKE LUTHERAN CHURCH

3921 277th Ave. NW – Isanti, MN 55040

Website: www.longlakeluth.org

Staff

Pastor Howard Skulstad 763-213-1136
E-mail address hskulstad@longlakeluth.org
Pastor Howard Cell Phone 612-232-8875
Pastor Rhonda Hlavinka 763-783-3625
E-mail Address rhondah@longlakeluth.org
Pastor Rhonda Cell Phone 763-229-4459
Church Office 444-5315

Church Office

FAX Machine 444-8066
Geri Fournier,
Financial Coordinator & Secretary 444-0279
Lynn Perrin, Custodian 444-5607
Kristy Anderson, Organist
Mary Martin, Parish Nurse 763-226-7286

Council Members

John Bartz, Chairperson	444-9731
Steve Vigstol, Property	753-0177
Matt Hylen, Finance	753-2149
Rose Hass, Congregational Life	444-5892
Monica Ahlman, Education	444-6462
Tony Steiner, Stewardship	444-6768
Candy McColley, Worship & Music	753-5187
Tina Anderson, Youth	612-747-6871
Dale Findell, Missions	689-2219

Church Organizations

Rose Hass, Council Secretary	444-5892
Donna Larsen, Director Adult Choir	444-9975
Friends of Ruth, June Huge	689-3174
Women of the ELCA (WELCA):	
Jean Hansen	444-5447
Serving Groups Coordinator	
Loretta Fornberg	444-5973
Sunshine Circle:	
Loretta Fornberg	444-5973
Betty Stanius	689-5405
Lundeen Scholarship Committee & Cemetery Sexton: Philip Lundeen	444-5357

Bell & Cross Committee Report

The May meeting of the Bell and Cross Committee was held on May 6, 2008 in the belfry. We took a good long look at each part of the bell, the head, the yolk, the roller bearings, the wheel and the broken striker. The head is the part that connects the bell to the yolk. The bell is connected to the head via four large clamps that have worn and loosened over time. This is easily visible by swinging the bell side to side. When the bell is swung one way, gaps open on the opposite side. When the bell is rung you can hear a clunk. The wheel is wooden and has dried out somewhat and the boltholes may have rounded out. We talked about replacing the wheel with an aluminum one and preserving the original wheel, but decided to look into restoring the original wheel first.

In early June we will jack the bell up and disassemble each individual part for inspection and repair. This should tell us exactly what needs to be done and whether or not the wheel can be restored.

There are actually two strikers for the bell and one has been broken for sometime. This is the striker that allows the bell to be tolled one ring at a time. The bracket that holds this striker in place has

cracked and broken. The bracket is made of cast iron and may need to be replaced but we'll try welding it first. Other parts such as the clamps that connect the bell to the head and roller bearings will be inspected when the bell is disassembled and replaced or tightened as needed.

Pictures were taken of the bell and the problem areas and by the time this article is in the Spire they should be posted in the Narthex.

We also took pictures of the Cross which may shed some light but until we can get up there and take a first hand look I doubt we can make any kind of decision on it.

To close I would like to thank all those who have been able to attend the meetings so far. I know there are more that would have liked to attend but couldn't. More meetings ahead! I appreciate any and all input. The next meeting will be scheduled after disassembly and inspection.

Steve Vigstol
Property Chair



Recycling Drive Reminder

Remember the Recycling Drive will continue throughout the summer at least. So bring all your aluminums, cans and other recyclables to Clarence's Recycling on Highway 65. Just let whoever is behind the counter know that it's being donated to Long Lake Lutheran Church and they will see that the proceeds go to the Capital Campaign.

Thanks so much for your continued support.

Steve Vigstol
Property Chair

Also remember, we are still recycling ink jet cartridges and cell phones. The drop boxes for these items are in the church entryway.

2008 Summer Festival and Auction Organizational Meeting

The first meeting to organize and plan this years' Summer Festival and Auction will be held Wednesday, June 4, 2008 at 7:30pm following the Wednesday night service.

Quite a number of folks have expressed interest through the time and talent survey. This first meeting is a place to get involved and help in the planning stages. We could use all the help we can get. More people involved means more fresh ideas and better ways to make this years' event a success.

Hope to see you there!

Steve Vigstol,
Property Chair

Luther Point Bible Camp

Greetings from Luther Point!

June 2008

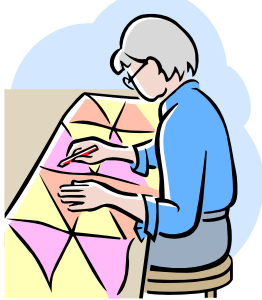
Camper Registrations Are Down: We are not sure why, but we are seeing a decrease in summer camp registrations this year. As of the writing of this note registrations are down well over 100 campers from previous years. We can speculate that it may be economic uncertainty, higher gas prices, less expendable income and all the factors that go into that scenario. We really don't know for sure what is causing the decrease.

We are asking for you to lift up the camp ministry in prayer. As a camp staff we are praying for a surge in camper registrations over the next 4-6 weeks. If you know of families that need assistance in sending their children to camp, remind them of the campership dollars available through your congregation and through the campership fund at Luther Point. There is still plenty of time to get more children enrolled in Bible Camp at Luther Point this summer.

Camper Story Worth Sharing: Recently I spoke with a grandparent couple who have been bringing their granddaughter to Luther Point for the past couple of years. The granddaughter lives in Montana. This year

she is eligible to come to the 3rd and 4th grade camp on her own without grandpa and grandma. The grandparents told me that at Christmas time she was talking about the fact that she gets to go to her Bible camp in Wisconsin this summer. What a wonderful story. A young girl from Montana is coming to her Bible Camp this summer. Her time at Luther Point Bible Camp means that much to her. Thanks be to God that her grandparents introduced her to Bible Camp at such a young age. **What kind of opportunities do you have to encourage a young person to come to Bible Camp?**

Luther Point History: Luther Point was incorporated with the State of Wisconsin in 1946. The camper cabins that are standing today are the original cabins built by the congregations of the Camp Association back in 1947 and 1948. The family cabins located north of the Retreat Center on the east shore of Akermark Bay were originally part of the Pine Cove Cabins Resort. We have five family cabins in that location, all of which have been newly remodeled in the past five years. The family cabins are winterized and available for use by families and friends of the Luther Point Bible Camp Association. Luther Point has 78 Lutheran congregations in its association from Wisconsin and Eastern Minnesota. Come and enjoy your Bible Camp on Big Wood Lake.



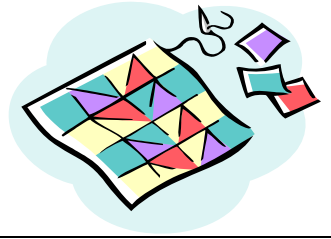
Sunshine Circle's Project of Interest:

Sunshine Circle has started a new project of making prayer shawls for the Harbor Room at Cambridge Hospital, which supports cancer patients.

If anyone would like to knit or crochet these at home, they can bring them in to church and put them in the Sunshine box in the Narthex. We will then tag them with Long Lake Lutheran Church tags and deliver them to the Harbor Room when we receive a good quantity of them.

We meet every second Tuesday of each month at 1:00 p.m. Our next meeting will be Tuesday, June 10th. Come join us.

“Two can accomplish more than twice as much as one, for the results can be much better.” *Ecclesiastes 4:9*
 Thank you,
 Sunshine Circle



WELCA

All the church women are invited to join us at our WELCA (Women of the Evangelical Lutheran Church of America) monthly meeting on June 19th at 1:00 pm.

**CIRCLES
 &
 GROUPS**



FRIENDS OF RUTH

The next Friends of Ruth meeting will be on June 5, 2008 at 7 p.m. in the Cornerstone. We invite all women of the church to join us as we get together for a time of devotion, snacks and working on the various mission projects, such as midwife kits.

In Christ's peace,
Friends of Ruth

FINANCIAL REPORT
For May~Through 5/18/08

<u>NEEDED FOR GENERAL FUND EACH WEEK:</u>	\$15,658.56
Contributions given through May 18	\$13,973.91
Net gain (deficit)	\$(1,684.65)
<u>NEEDED FOR MORTGAGE FUND EA. WEEK:</u>	\$ 5,116.86
Contributions given through May 18	\$ 5,914.50
Net gain (deficit)	\$ 797.64
<u>COUNTY MARKET CARD PROCEEDS</u>	
<u>~FOR MAY, THROUGH MAY 18</u>	\$ 150.00
<u>CAPITAL CAMPAIGN GIVING TO DATE</u>	\$ 1,988.00



JUNE



Long Lake Lutheran Church
Non-Profit Organization
3921 277th Ave NW
Isanti, MN 55040

U.S. Postage
PAID

Phone 763-444-5315

Permit NO. 5
Isanti, Minnesota 55040

MISSION STATEMENT:

**“FOLLOWING CHRIST’S EXAMPLE
OF LOVE AND FORGIVENESS
WE OPEN OUR HEARTS AND
OUR DOORS TO ALL PEOPLE AS WE
PROCLAIM THE GOSPEL AND GROW
IN CHRIST’S LOVE.”**

**ADDRESS SERVICE REQUESTED
DATED MATERIAL –
PLEASE EXPEDITE**